



Ningbo HYCONNECT COMMUNICATION TECHNOLOGY CO., LTD
Add: No. 240, New Zhoutang Road, Qiaotou Town, Cixi City, Ningbo, Zhejiang Province, China
Tel: +86 574 63530709
Fax: +86 574 63533253
E-mail: sales@hy-connect.com
Web: www.hy-connect.com



Ningbo HYCONNECT Communication Technology Co., Ltd

- ▶ HY Connect you , Connect the World
- ▶ Manufacturer, sales, service



What We Do

Founded in 2006, HY CONNECT is a high-tech company providing communication network solutions and services to customers all over the world. HY CONNECT offers a variety of standard telecommunication products based on individual needs, especially the solutions for customized products and solutions.

With the rich experience in manufacturing and marketing of structured cabling networks, our product range includes Cat.5e/6/6A keystone jacks, patch panels, faceplates; Cat.5e/6 copper solutions, fiber solutions as well as house wiring.

What We Guarantee

In order to improve the production effectiveness, HY CONNECT invests a lot in new automatic machines like automatic assembly machine, automatic pin inserting machine, automatic welding machine. The automatic machines are used for our self-developed keystone jack and patch panels, which guarantee the delivery date.

After production, all items are inspected by skilled technician or inspectors. The testing facility includes: slater spray tester, conduction tester, Fluke 1800 and Fluke 8000, etc. The testing report will be reserved in our system to guarantee quality.

90% of our business is OEM product and service. We get software engineer for designs, molding engineer to work out the sample, product engineer to check product quality, and art designer for label and package. All is to guarantee OEM orders complete successfully.

All HY CONNECT products has after-sale services, no matter customer has technical problem or product problem, we would take response within 24 hours.

Our Vision

Years of development impels HY Connect to be an integrated enterprise combined with innovation, design, research, product, sales and service. We will always adhere to the philosophy of “quality oriented for hundred years” providing customers with the best quality products and after -sale services.





Pulling Force Tester



Video Measuring System



Salt Sprayer Tester



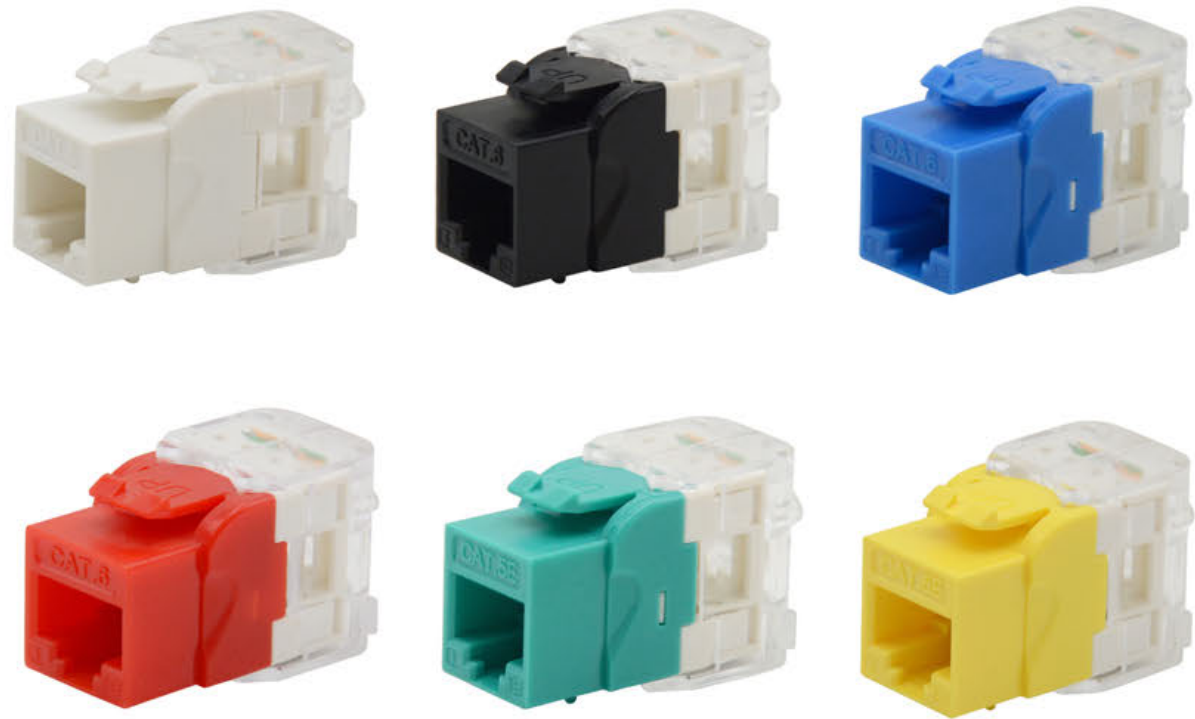
Fluke tester



CONTENTS

Keystone Jack.....	05-17
Faceplate	21-24
Patch Panel	25-34
Cable Manager.....	35-40
Patch Cord	41-43
Plug	44
Boot	45
Tool	46

HKJ-801M, Tool-less 180 Degree Unshielded Keystone Jack



Characteristics

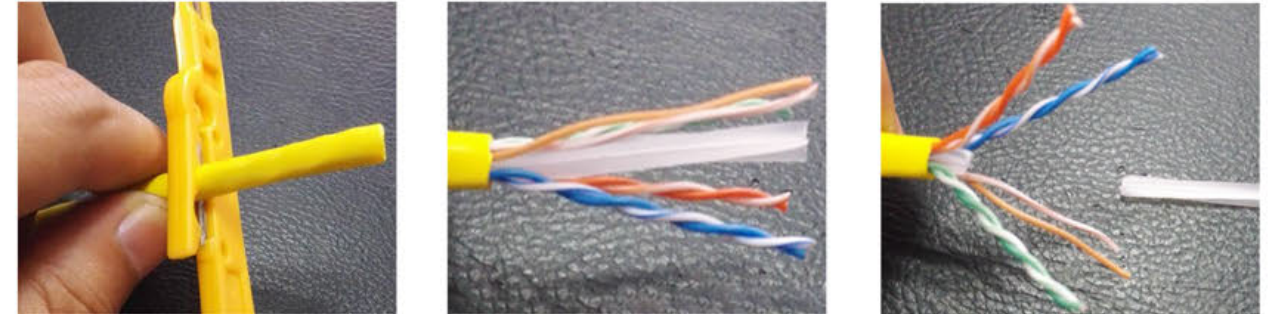
- The toolless keystone jack is easy and fast termination without any tool
- The wiring base has 4 numbers to guide color sequence
- Up and down IDC design makes wiring orderly and well organized
- The Jack has unique termination tool that makes wiring easier and faster
- Intelligent LED light can be assembled with this keystone jack
- The jack can be unshielded category CAT5E/CAT6/CAT6A
- Various customize colors are available for jacks and caps

Description

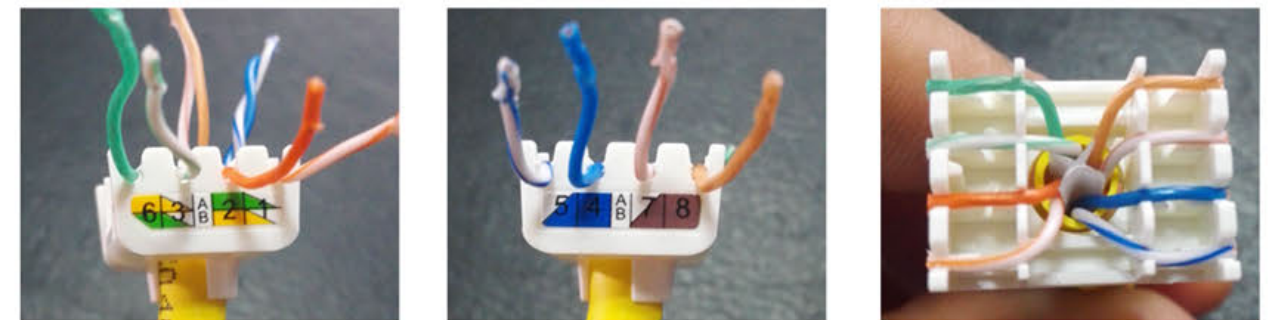
Description	CAT5E	CAT 6	CAT6A
Tool-less keystone jack 180 degree	HKJ-801M-C5E	HKJ-801M-C6	HKJ-801M-C6A

Installation

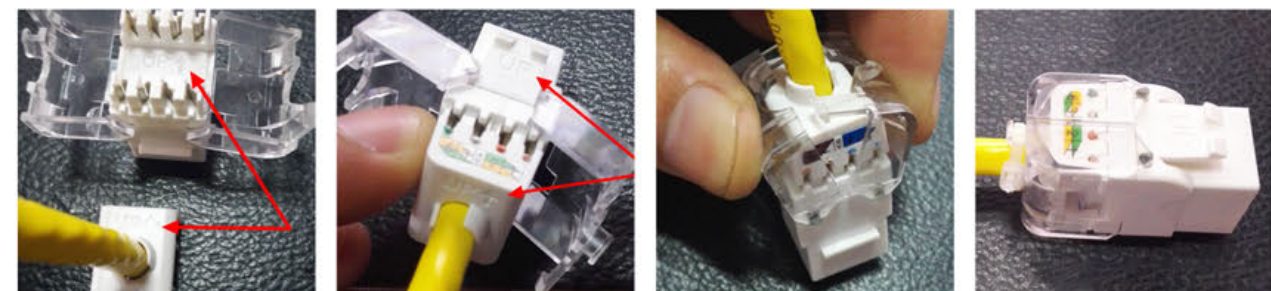
1.Strip approximately 25mm of the outer jacket from the twisted pair cable,and trim off the cross web filler;



2.Insert wires into the cap slot under sticker coding diagram,and choose T568B wiring scheme.Remove the excess wire length;



3.Place the wired cap into the termination base in the UP direction, and press down firmly until you hear the snap. Spin the transparent cap and press down into the termination base, use table tie to firm the cap;



HKJ-801 Slim UTP 180 Degree Keystone Jack



Characteristics

- Slim and impact design with width 16.8mm and length 29.7mm
- The wiring base has 4 numbers to guide color sequence
- Up and down IDC hold the cable tightly
- The Jack has unique termination tool that makes wiring easier and faster
- Intelligent LED light can be assembled with this keystone jack
- The jack can be unshielded category CAT5E/CAT6/CAT6A
- Various customize colors are available for jacks and caps

Description

Slim UTP keystone jack 180 degree

CAT5E

HKJ-801-C5E

CAT 6

HKJ-801-C6

CAT6A

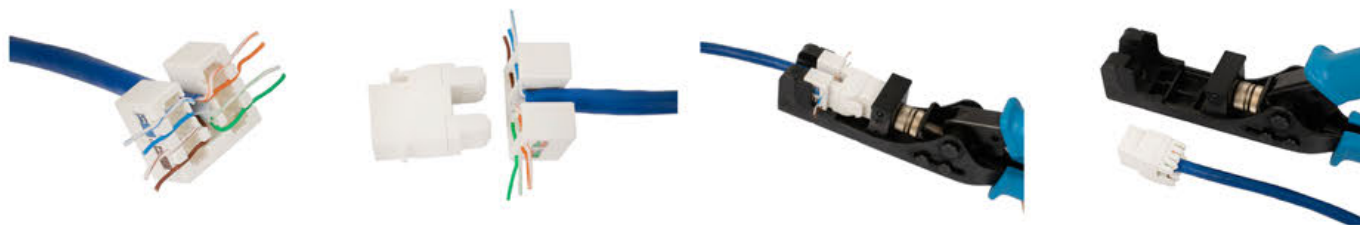
HKJ-801-C6A



Termination

Speed Termination Tool for Slim 180 Degree Jack

HT-801



HKJ-802FM Shielded Tool-less Keystone Jack 180 Degree



Characteristics

- Zinc Alloy fully shielded body reduces EMI/RF interference
- Fast installation without any special punch tool or crimping tool
- Compatible with all standard wall plate or blank patch panel
- Clear color indication on caps avoids mistakes when termination the cables
- Support 22-26AWG stranded and solid wires
- The keystone jack rated Category 5e/6/6A

Description

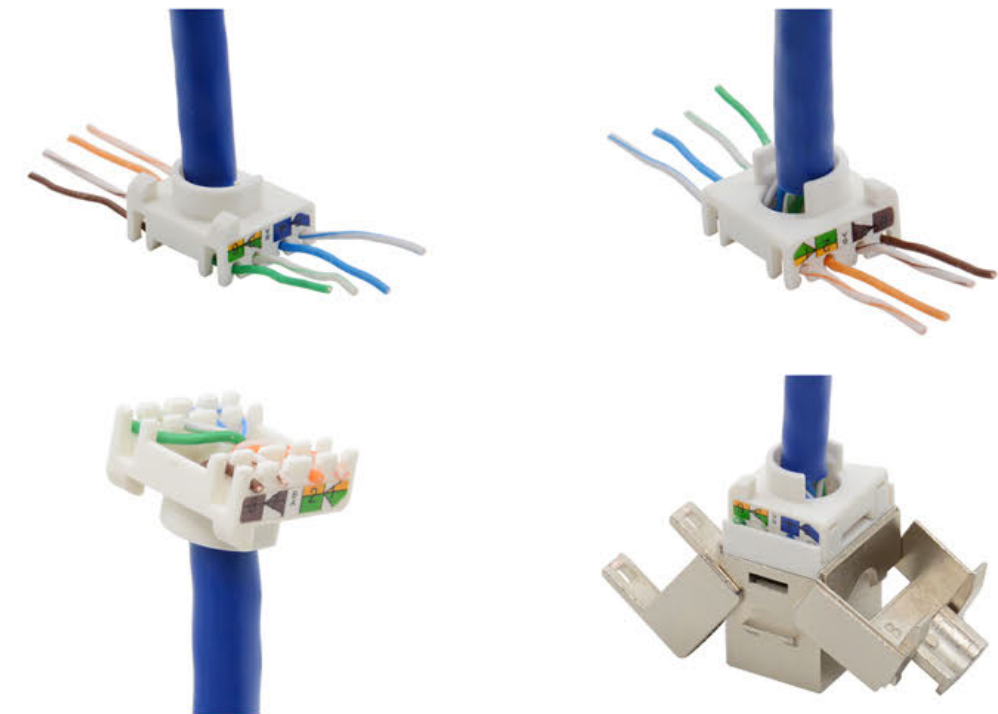
Mini type shielded tool-less keystone jack HKJ-802FM-C5E HKJ-802FM-C6 HKJ-802FM-C6A

CAT5E

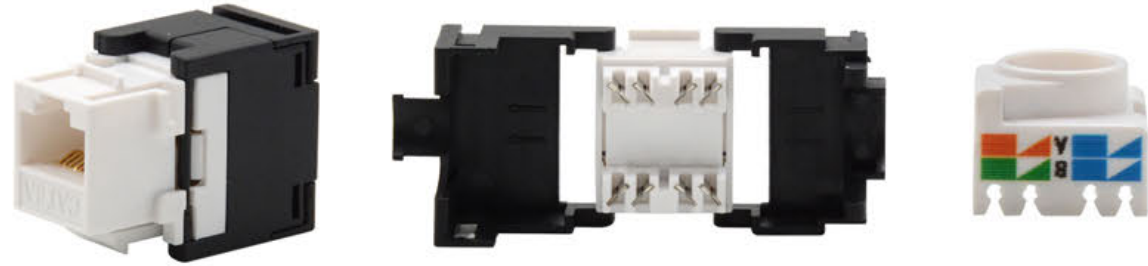
CAT 6

CAT6A

Easy Termination



HKJ-804M Unshielded Tool-less Keystone Jack 180 Degree



Characteristics

- The Tool-less jack requires no punching tool, fast and easy installation
- Concise and compact design with classic white and black color good looking
- The jack is compatible with all standard wall plate, surface box and blank patch panel
- Support T568A/B with the wiring diagram on clip
- Category 5E/6 available

Description

Cat5e UTP Tool-less keystone Jack 180 Degree

Cat6 UTP Tool-less keystone Jack 180 Degree

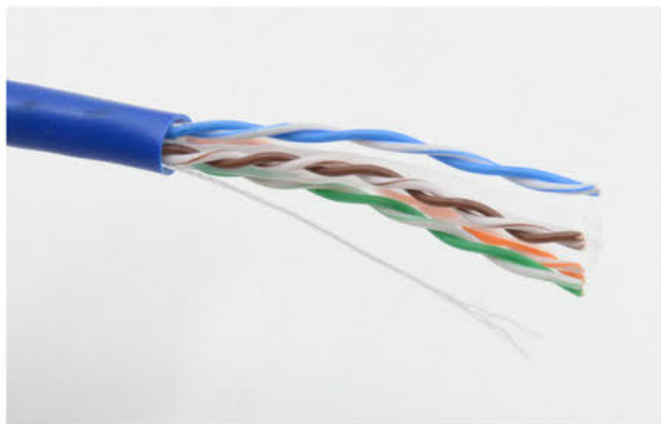
P/N

HKJ-804M-C5E

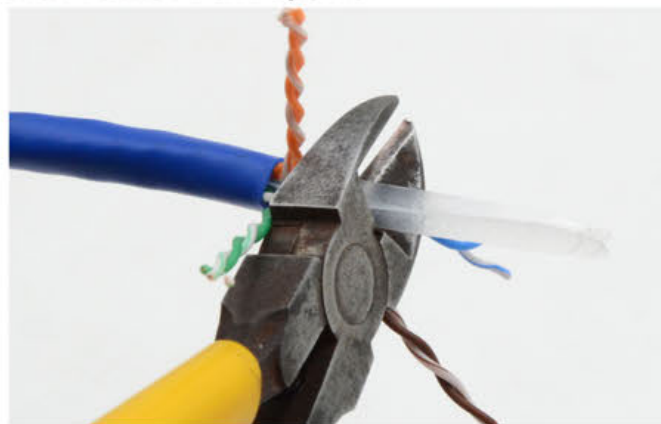
HKJ-804M-C6

Easy Termination

1.Stripping off the cable jacket by stripping and cutting tool

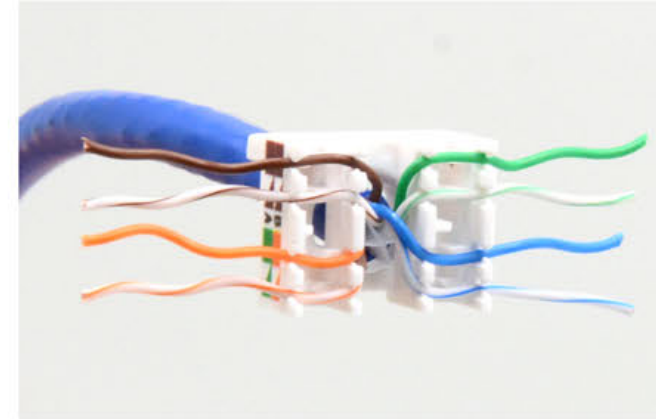


2.Cut off the ripcord, and then splay the conductor pairs to expose the spline and then remove the spline

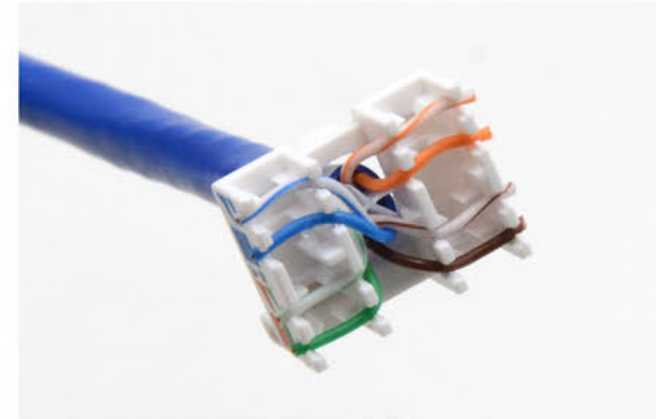


HKJ-804M Unshielded Tool-less Keystone Jack 180 Degree

3. Untwist and seat the pairs one pair at a time based on the color sequence T568B



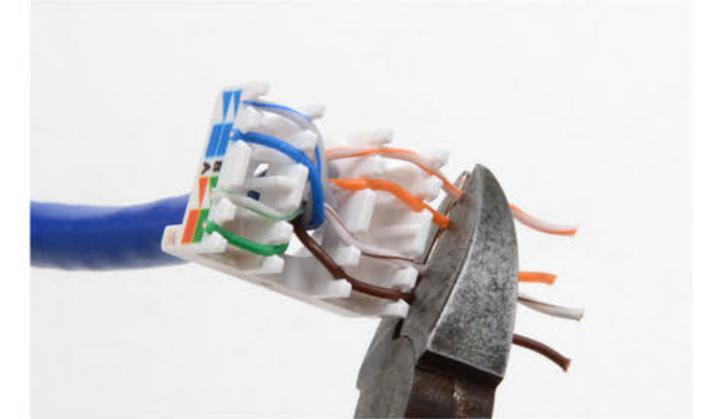
5.Make sure the conductor holder follows the correct sequence on the jack base



7. Press the side caps with fingers to make sure the conductor holder had been tightly closed



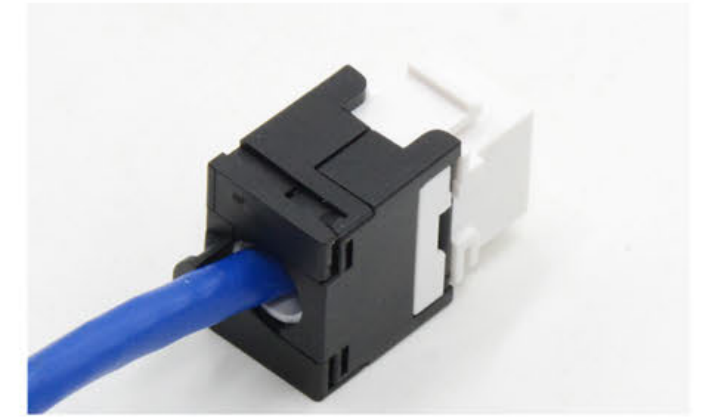
4. Cut the excess wires and make all neat



6. Place the conductor holder into the jack



8. Done! All ready to assemble into wall plate or patch panel



HKJ-901M UTP Tool-less Keystone Jack 90 degree



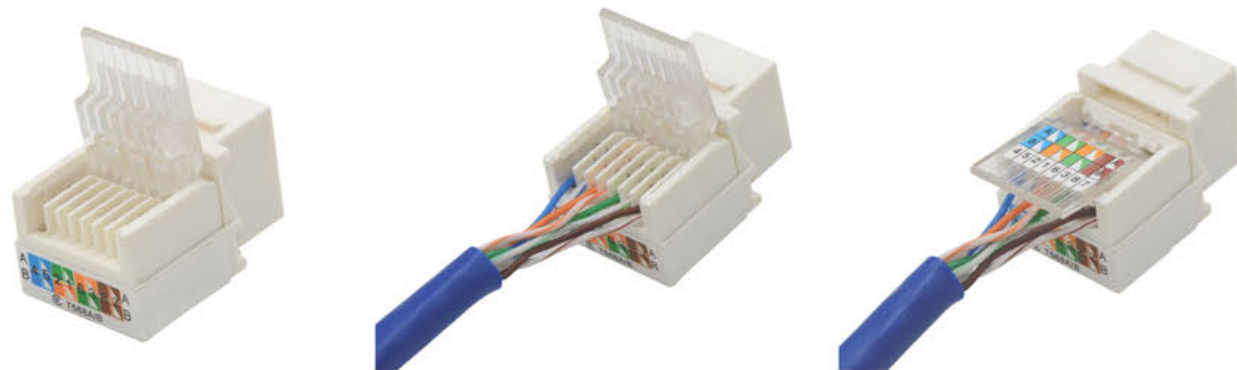
Characteristics

- This Tool-less keystone jack can be Cat3 voice telephone system, as well as Cat5e/6 data system
- Easy to terminate- no more punch down tools required
- The termination cap is marked with highly visible colors for easy T568A or T568B wiring
- The jacks fits for all standard wall plate, mounting box and blank patch panel
- This jack Cat3 can be with PCB or without PCB structure, both performed well with Cat3 system

Description	CAT3	CAT5E	CAT6
-------------	------	-------	------

UTP tool-less keystone jack 90 degree	HKJ-901M-C3	HKJ-901M-C5E	HKJ-901M-C6
---------------------------------------	-------------	--------------	-------------

Tool Free Termination



HKJ-902 Punch Down UTP Keystone Jack 90 degree



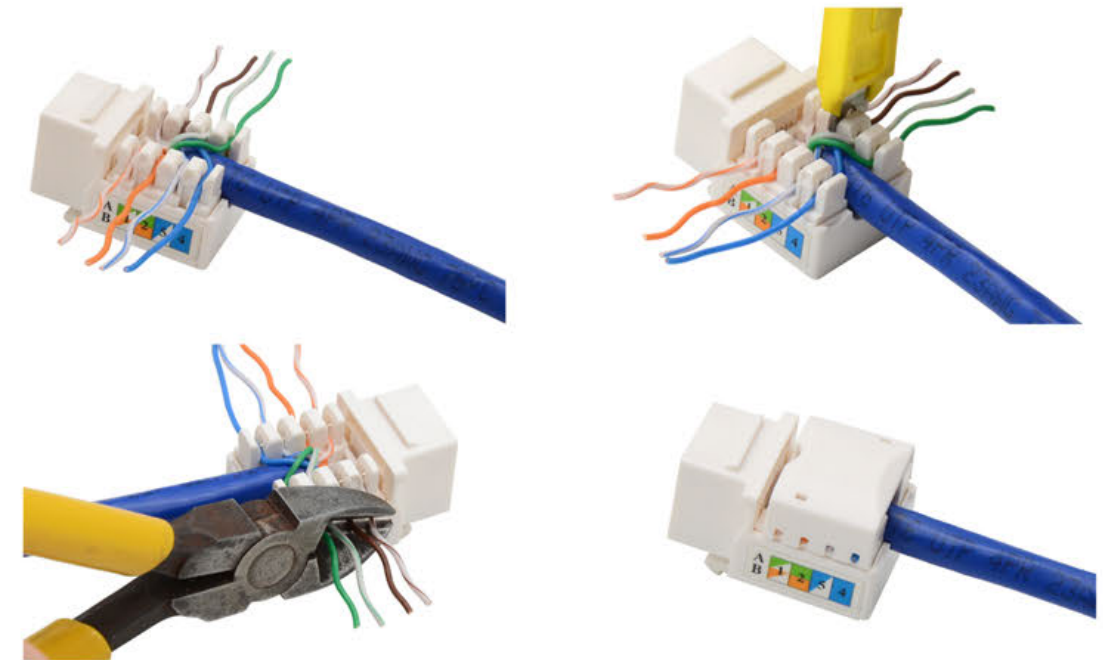
Characteristics

- Each Keystone Jack includes 110 type IDC termination with strain relief caps
- The jack can be voice Cat3 and data Cat5E/Cat6
- Meets ISO/IEC 11801, TIA/EIA568B.2
- Accepts 22-26AWG solid wires
- Available colors white, blue, red, green, black and customized colors

Description	CAT3	CAT5E	CAT6
-------------	------	-------	------

UTP keystone jack 90 degree	HKJ-902-C3	HKJ-902-C5E	HKJ-902-C6
-----------------------------	------------	-------------	------------

90 Degree UTP Keystone Jack Termination Guidance



HKJ-903 With Shutter 90 Degree Keystone Jack



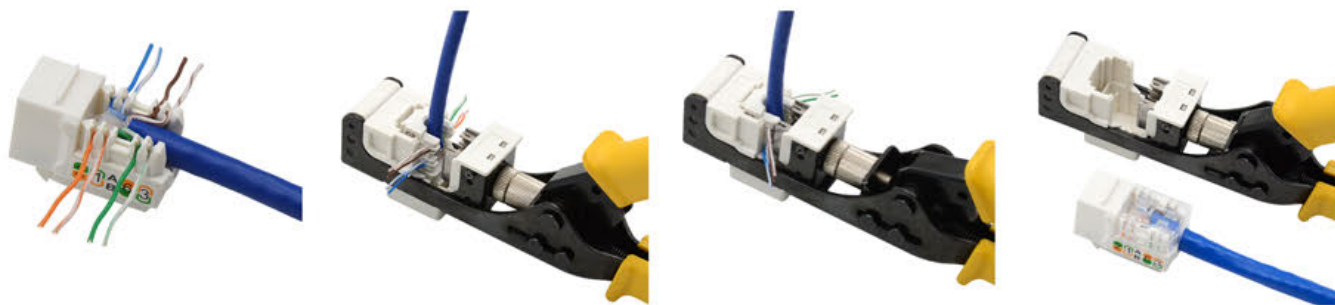
Characteristics

- This keystone jack can be dirt-proof shutter
- It's dual use punch down style that you can punch with 110 tool or LSA tool.
- The jacks are designed with featured PIN structure in high and low positions that delivers Cat6A 500MHz performance
- The unique IDC wiring structure provides an effective solution to reduce alien crosstalk from neighboring wires
- The slim design match types of RJ45 modular patch panel and sockets.
- The Jack has unique termination tool that makes wiring easier and faster

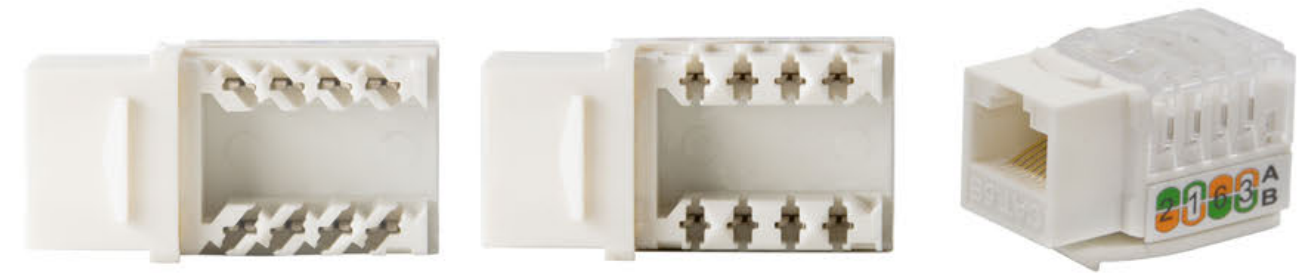
Description

	CAT5E	CAT6	CAT6A
UTP Keystone jack 90 degree	HKJ-903-C5E	HKJ-903-C6	HKJ-903-C6A
UTP Keystone jack 90 degree with shutter	HKJ-903D-C5E	HKJ-903D-C6	HKJ-903D-C6A

Tool



HKJ-904/904A Punch Down 90 Degree Keystone Jack



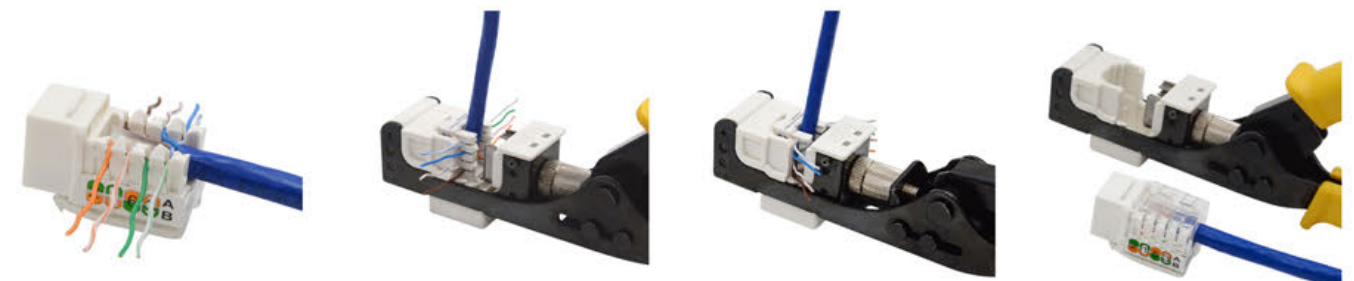
Characteristics

- This keystone jack is dual use IDC, which can be punched with 110 or krone tool
- The jack is designed with 2 types of punching base, one is straight, and the other is inclined
- Keystone jack features a unique patterned print circuit board that delivers cat5e and Cat6 performance
- Dual color-coded labeling for both T568A and T568B wiring scheme
- Fit in all standard wall faceplate, mounting box and blank patch panels

Description

	CAT5E	CAT6
UTP keystone jack 90 degree	HKJ-904-C5E	HKJ-904-C6
UTP keystone jack 90 degree Inclined IDC	HKJ-904A-C5E	HKJ-904A-C6

90 Degree UTP Keystone Jack Termination Tool



HKJ-ZT01 Unshielded RJ45 Female In-line coupler



Characteristics

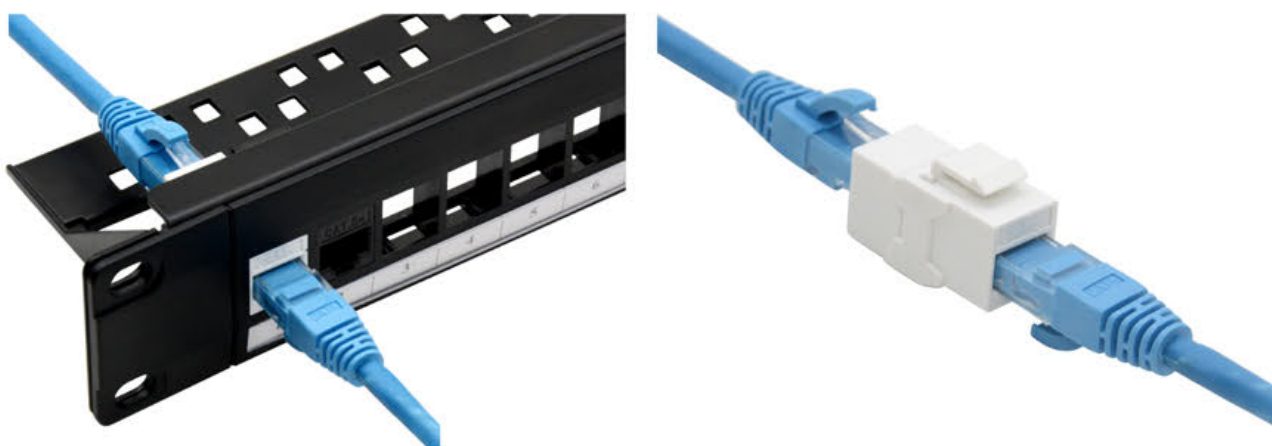
- Ethernet Cable Extender Female to Female Inline coupler with 2 RJ45 connectors
- Easy plug-in design makes the right connection
- The jack with 2 RJ45 female connections, practical and cost-effective solution for joining 2 cables
- It's designed for RJ45 computer networking applications, computer networking, voice and data
- It's compatible with standard wall plates and blank patch panels
- White, Black, Grey and other customized colors available

Description

UTP RJ45 In-line coupler

CAT5E	CAT6	CAT6A
HKJ-ZT01-C5E	HKJ-ZT01-C6	HKJ-ZT01-C6A

Application



HKJ-ZT02 UTP 180 Degree RJ45 In-line Coupler



Characteristics

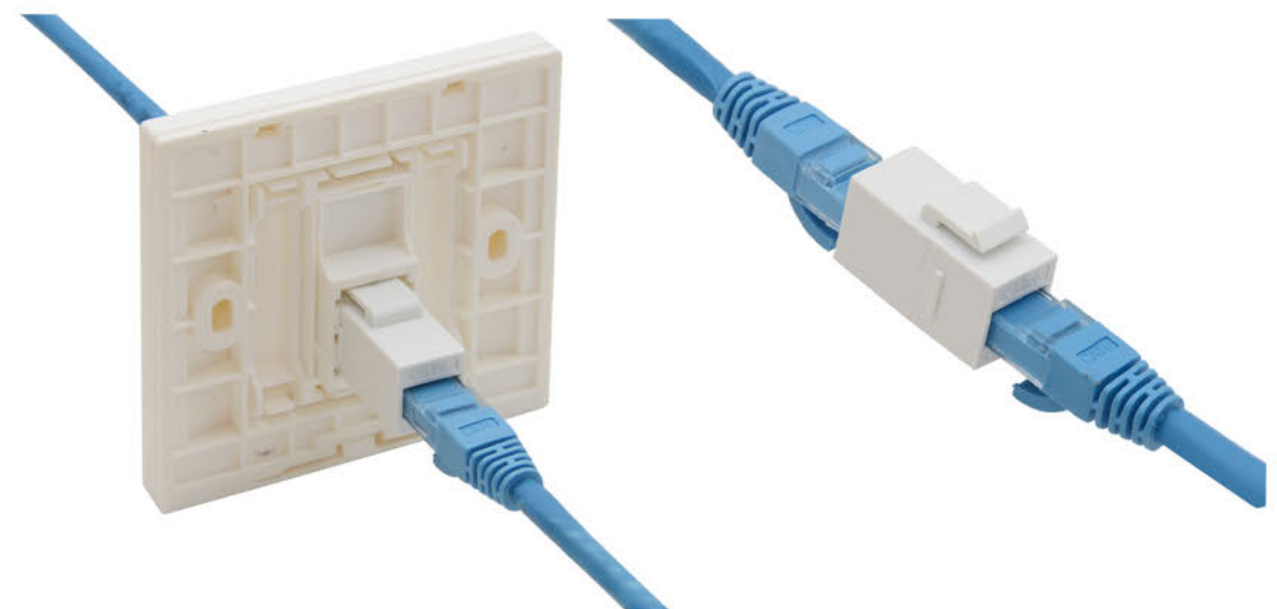
- The In-line couplers make the correct connection when the networking cables need to be extended
- It's designed for computer networking, voice and data applications
- The coupler fits for standard wall plate and blank patch panels
- Compatible with both T568A and T568B wiring schemes

Description

UTP 180 Degree RJ45 In-line Coupler

CAT5E	CAT6
HKJ-ZT02-C5E	HKJ-ZT02-C6

Application



HKJ-ZT05 Unshielded RJ45-RJ45 Female In-Line Coupler



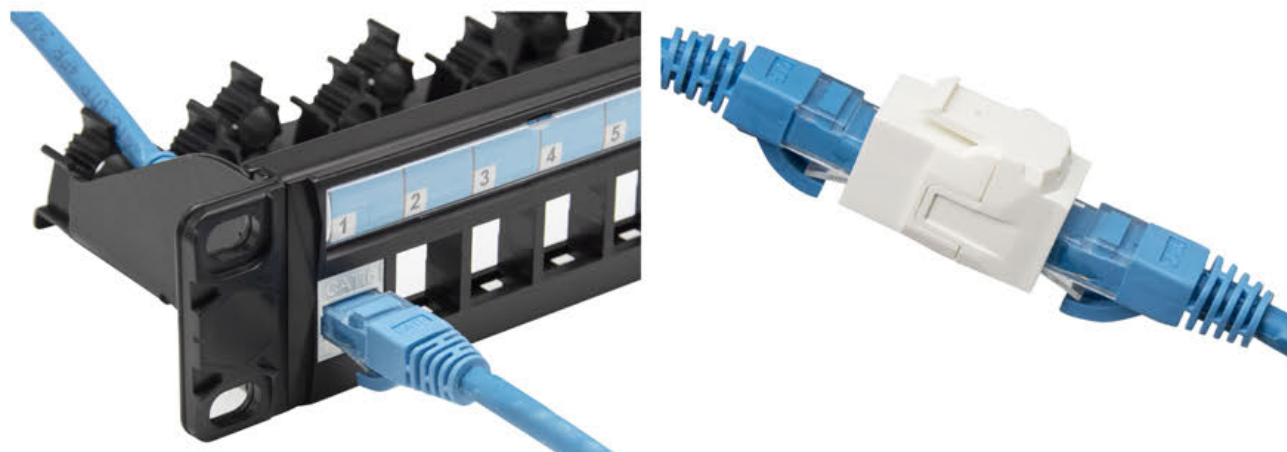
Characteristics

- The coupler is compact design with 30.6mm length, fitting all wall plate, patch panel
- The 8 Contact PIN is 4 up 4down layout to reduce the signal interference
- Snap fitting assembling makes connection firmly and stably when plug in and out
- This new coupler has design and utility patent
- High performance exceed 500MHZ, Cat6A/7/8 available

Description

Description	CAT5E	CAT6	CAT6A
Unshielded RJ45 In-line Coupler	HKJ-ZT05-C5E	HKJ-ZT05-C6	HKJ-ZT05-C6A

Application



HKJ-ZT05 Shielded RJ45-RJ45 Female In-Line Coupler



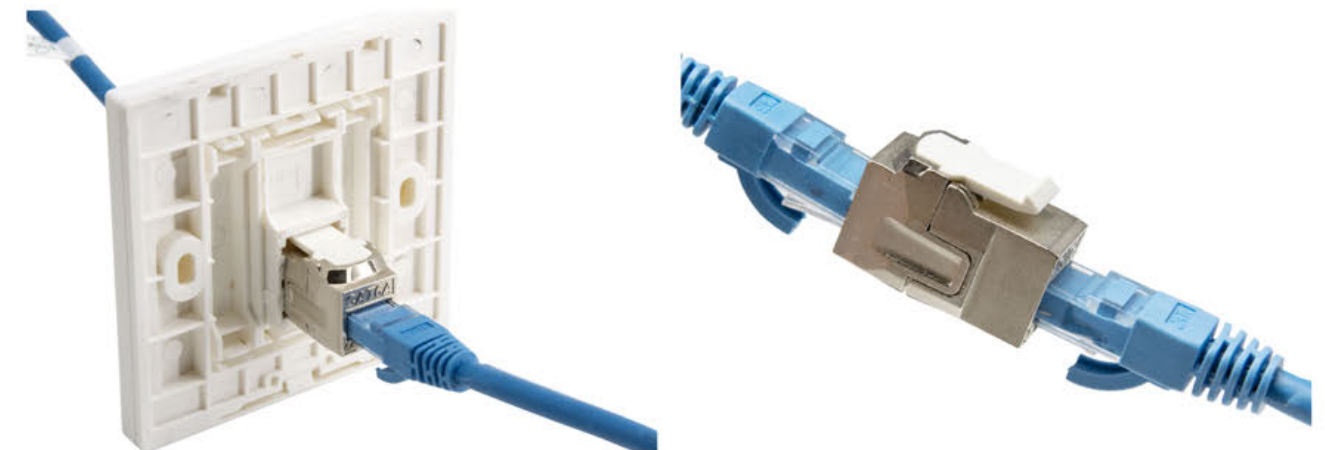
Characteristics

- The coupler is compact design with 30.6mm length, fitting all wall plate, patch panel
- The 8 Contact PIN is 4 up 4down layout to reduce the signal interference
- Snap fitting assembling makes connection firmly and stably when plug in and out
- This new coupler has design and utility patent
- High performance exceed 500MHZ for shielded Cat6A/7/8

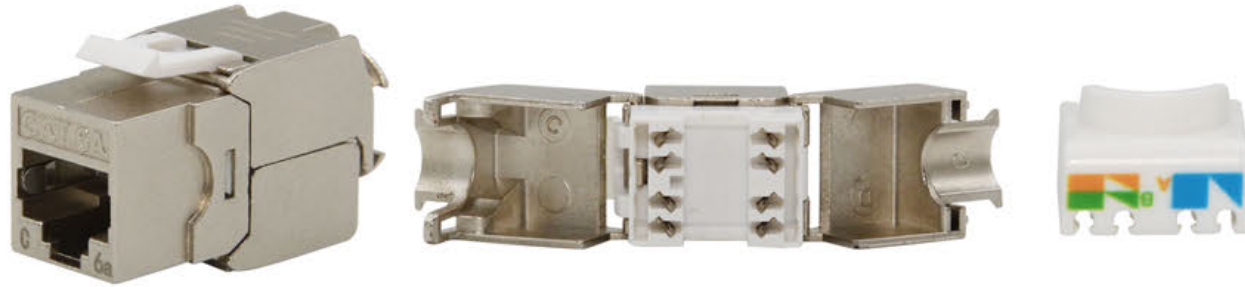
Description

Description	CAT5E	CAT6	CAT6A
Shielded RJ45 In-line Coupler	HKJ-ZT05-C5E	HKJ-ZT05-C6	HKJ-ZT05-C6A

Application



HKJ-809FM RJ45 Shielded Tool-less Keystone Jack Module



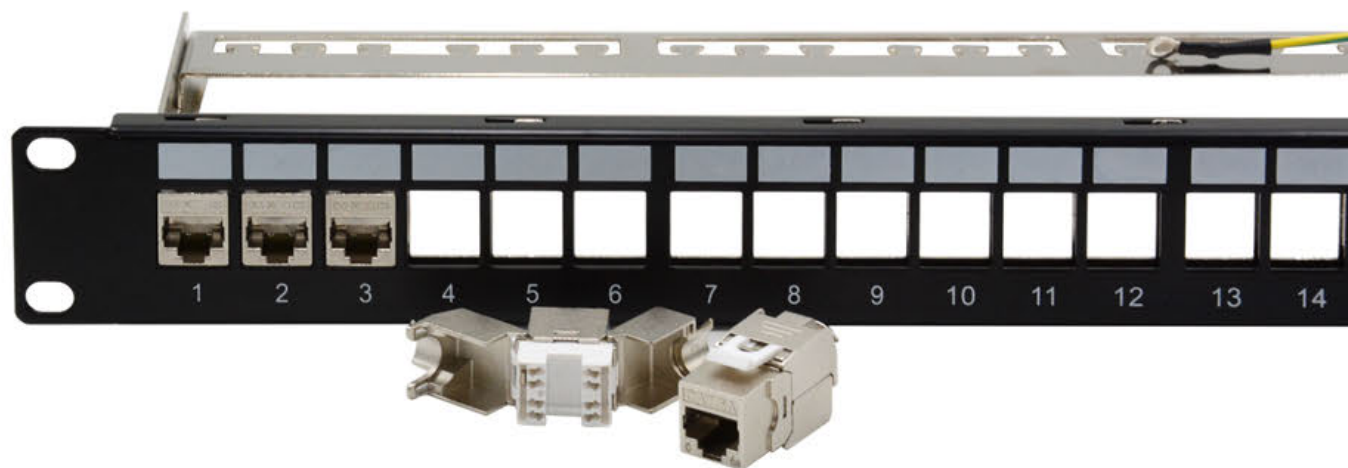
Characteristics

- The Shielded keystone jack is Die-casting design for optima EMI protection
- Easy installation without any special punch tool or crimping tool
- Contact PIN with golden plated from 3u"~50u" for optimal conductivity
- Dual color coded labeling for T568A and T568B wiring
- The jack is fully backward compatible to all lower standards cabling systems
- The jack performance conforms to ANSI/TIA-568-C.2 Category 6A standard
- Match all standard Wall plate, blank patch panel

Description

Description	CAT5E	CAT6	CAT6A
Shielded Keystone Jack Tool-less	HKJ-809FM-C5E	HKJ-809FM-C6	HKJ-809FM-C6A

Application



HFP-8601 Networking Wall Faceplate 86*86 Size



Characteristics

- Simple and compact design with high-resistance ABS
- Press the edge button, the frame can be open easily for assembly
- 1 Port/2Port/4 Port available
- The front frame can be straight and angled
- RJ45 keystone jack and fiber connectors are compatible with the faceplate
- Faceplate Dimension:86(L) x 86(W) mm , with thickness 10.2mm

Description

Description	P/N
Faceplate 86 type , 1 pot	HFP-8601-01
Faceplate 86 type , 2 pot	HFP-8601-02
Faceplate 86 type , 4 pot	HFP-8601-04

Compatible with Copper RJ45 jack and Fiber connector



HFP-8602 Detachable Wall Faceplate 86*86mm



Characteristics

- The wall plate allows you to create the perfect mix of voice and data connections
- Compatible category-rated copper keystone jacks and fiber connectors
- The faceplate is detachable style. 1 port, 2 port and just decoration blank insert available
- Out proof shutter available for 1/2 port
- High resistant ABS in white

Description

Faceplate 86 type, Single Port
Faceplate 86 type, Dual Port

P/N

HFP-8602-01
HFP-8602-02

Compatible with Copper RJ45 jack and Fiber connector



HFP-8602A Detachable Wall Faceplate 86*86mm



Characteristics

- The wall plate allows you to create the perfect mix of voice and data connections
- Compatible category-rated copper keystone jacks and fiber connectors
- The faceplate is detachable style. 1 port, 2 port or just decoration blank insert available
- straight and angled insertion for keystone jack
- High resistant ABS in white

Description

Faceplate 86 type, Single Port, Angled
Faceplate 86 type, Dual Port, Angled

P/N

HFP-8602A-01
HFP-8602A-02

Compatible with Copper RJ45 jack and Fiber SC connector



HFP-12001 Detachable US Type 120 Wall Faceplate



Characteristics

- The faceplate can be removable for flexible applications
- The wall plate allows you to create the perfect mix of voice and data connections
- It's popular in US market, the dimension is 120 x 70mm, with thickness 10.1mm
- Both RJ45 and Fiber connectors can fit this wall palte
- The faceplate is made of high-resistance ABS
- Available 1Port/2Port/3Port

Description

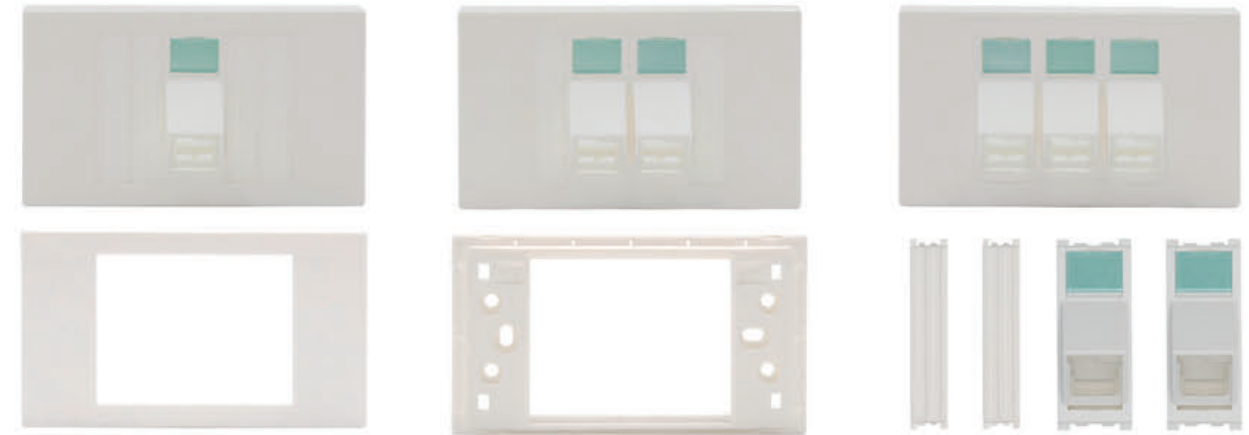
P/N

US Type 120 Faceplate, 1 Port	HFP-12001-01
US Type 120 Faceplate, 2 Port	HFP-12001-02
US Type 120 Faceplate, 3 Port	HFP-12001-03

Compatible with Copper RJ45 jack and Fiber connector



HFP-12001A Angled US Type 120 Wall Faceplate



Characteristics

- The faceplate can be straight and angled adapters
- The wall plate allows you to create the perfect mix of voice and data connections
- It's popular in US market, the dimension is 120 x 70mm, with thickness 10.1mm
- Both RJ45 and Fiber connectors can fit this wall palte
- The faceplate is made of high-resistance ABS
- Available 1Port/2Port/3Port

Description

P/N

Angled US Type 120 Faceplate, 1 Port	HFP-12001A-01
Angled US Type 120 Faceplate, 2 Port	HFP-12001A-02
Angled US Type 120 Faceplate, 3 Port	HFP-12001A-03

Compatible with Copper RJ45 jack and Fiber SC connector



HPP-2401/HPP-24801 Modular Unshielded Patch Panel 24 Port/48 Port with Back Bar



Characteristics

- 1U 24 port, 2U 48 port are available
- The panel is constructed of steel and fits into a standard 19" wide equipment rack with 1U height.
- The rack mountable patch panel features a color-coded labeling for T568A and T568B wiring scheme
- The patch panel is compatible with Cat6A/6/5E category and lower classes
- Each port labeled with white paper for identifications

Description

Description	CAT5E	CAT6	CAT6A
UTP patch panel 24 port	HPP-2401-C5E	HPP-2401-C6	HPP-2401-C6A
UTP patch panel 48 port	HPP-24801-C5E	HPP-24801-C6	HPP-24801-C6A

Application



Paper label for identification

RJ45 Jacks

Rear bar management

HPP-2402/HPP-24802 unshielded patch panel 24 /48 port



Characteristics

- 1U 24 port, 2U 48 port are available
- Front module can be removable for easy installation and replacement
- Using a front access patch panel with module removable, you can get to all your cables and terminations easily
- Transparent label holder can be snap out for replacement
- Back bar assembled with 12pcs independent cable rings for organizing the cable easily and orderly
- Clearly number ports printing and blank labels for different identification
- Dual IDC 110/Krone, Meet FCC 68 requirements, RJ45 Ethernet, T568A/B
- Color codes T568A and T568B are separately remarked on the back labels
- Voice and data networking applications 1U rack mountable

Description

Description	CAT5E	CAT 6	CAT6A
UTP patch panel 24 port removable	HPP-2402-C5E	HPP-2402-C6	HPP-2402-C6A
UTP patch panel 48 port removable	HPP-24802-C5E	HPP-24802-C6	HPP-24802-C6A

Detailed features





Characteristics

- This loaded patch panel can be with or without shutter
- Transparent label holder can be snap out for replacement
- Heavy duty 24 port patch panel supports Ethernet Cat6/6A, also backward with Cat5e and cat5 cablings
- Color codes T568A and T568B are separately remarked on the back labels
- Works perfectly with Punch Down Tool 110 or Krone Tool
- Meets ANSI/EIA/TIA 568-B.2-1 and ISO/IEC 11801 Standards

Description

	CAT5E	CAT 6	CAT6A
UTP patch panel 24 port with back bar	HPP-2403-C5E	HPP-2403-C6	HPP-2403-C6A
With shutter UTP patch panel 24 port	HPP-2403-C5E	HPP-2403-C6	HPP-2403-C6A

Detailed features

1.24 port labeling for different identification

The transparent holder with press button, easy for label change



2.Color sequence is in accordance with the front port, support both T568A/T568B wiring IDC clips hold the cables tightly in case of any dropping off

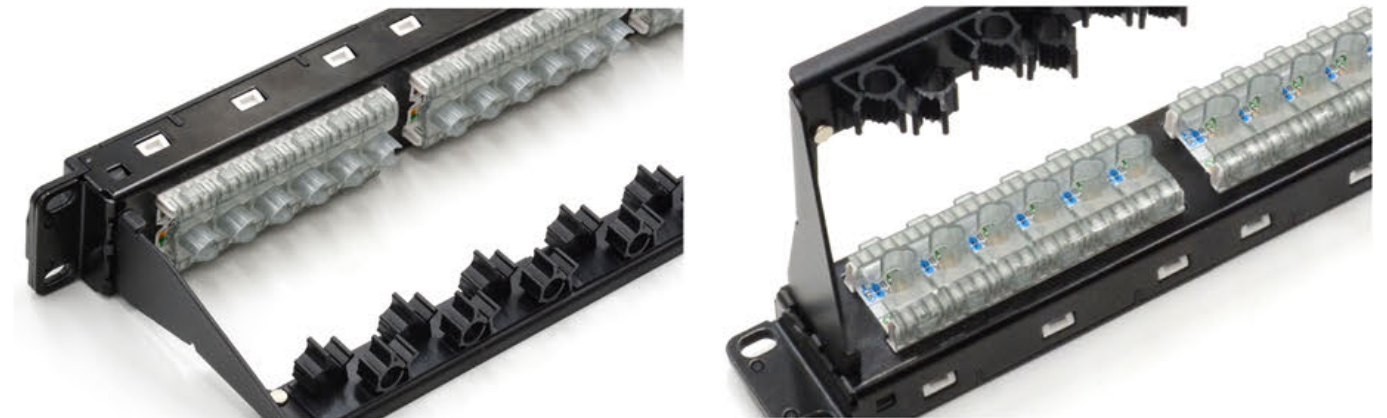


3.Back bar with cable holder



4.Transparent cap prevent dust in.

The arc design protects the cables from over bending or break up



HPP-K2401/K2401F Blank Patch Panel 24 Port with Back Bar



Characteristics

- Empty Port design 24 Port matches all standard keystone jacks and in-line couplers
- Detachable back bar with cable rings keep the cable neat and tidy
- Transparent label holder can be snap out for different identification
Clearly number ports printing and blank labels for identification
- Provide solutions for both Unshielded and Shielded Systems
- Fits on racks and cabinets with 19 inch mounting width
- Comply with ISO/IEC11801, TIA/EUA 568 Standards

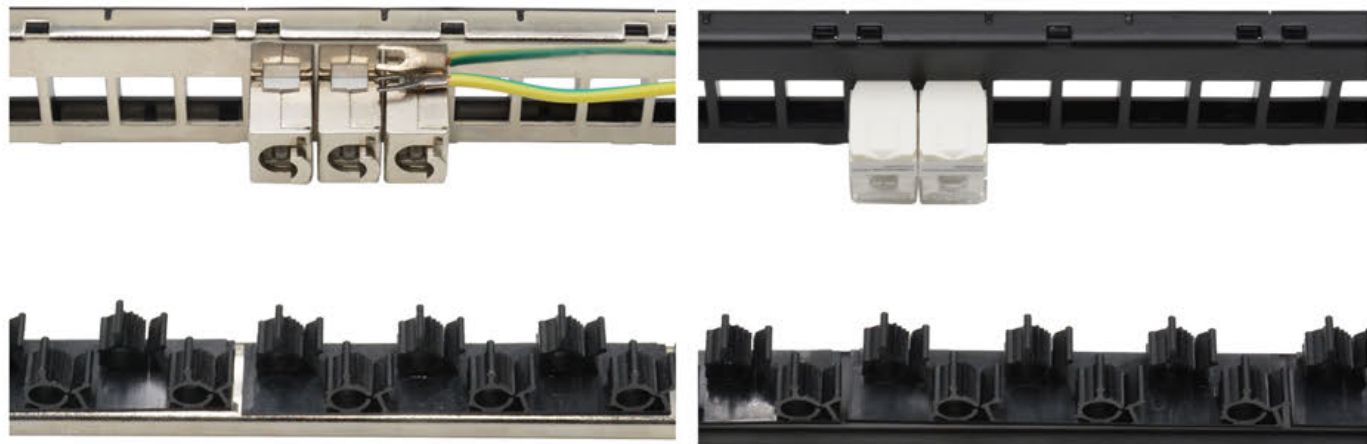
Description

UTP Blank Patch Panel 24 Port with Back Bar
FTP Blank Patch Panel 24 Port with Back Bar

P/N

HPP-K2401
HPP-K2401F

Applications



HPP-K2402/K24802 Blank Patch Panel with frame removable 24 port or 48 port



Characteristics

- This blank patch panel is flexible with front frame removable
- Empty Port 24 Port/48 port can match all standard keystone jacks and in-line couplers
- Detachable back bar with cable rings keep the cable neat and tidy
- Transparent label holder can be snapped out for replacement
- Clearly number ports printing and blank labels for different identification
- Fits on racks and cabinets with 19 inch mounting width
- Compatible with all category keystone jacks like Cat5e/Cat6/cat6A/Cat7

Description

UTP Blank Patch Panel 24 Port frame removable with Back Bar
UTP Blank Patch Panel 48 Port frame removable with Back Bar

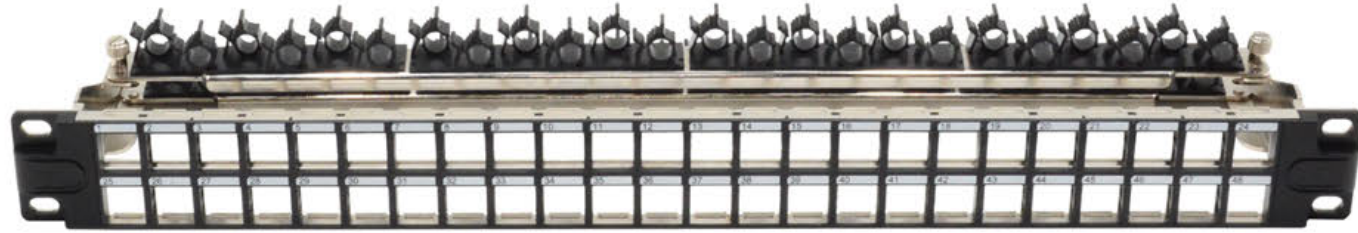
P/N

HPP-K2402
HPP-K24802

Application



HPP-K4801F 1U 48 Port Shielded Blank Patch Panel



Characteristics

- 48 Port 1U high density blank patch panel can fully loaded 48 modular jacks
- Front Frame is made of high quality ABS in case of any scratch
- 2 Back bars are connected with the screws; the top bar can be removed for flexible adjustment
- Silk printing number ports for clear identification and remarks
- This blank patch panel can be Shielded and Unshielded
- It's compatible with Cat7/6A/6/5E keystone jacks

Description

Shielded 1U 48 Port Blank Patch Panel

P/N

HPP-K4801F

Applications



HPP-K2403 6 Color indicator Blank Patch Panel



Characteristics

- Panel frame with qualified SPCC cold rolling steel 2parts type, front panel and cable tray with plastic powder clad, black MATT finish, back panel and back bar plated
- Front ports with 6 colors indicator, which can distinguish different cabling functions.
- Standard ports are compatible with most standard modules
- Integrated back bar provide good cable management, relieving the cable tension and make the wiring more stable and clear.
- Panel back with earth wire to make sure of the security
- Standard 19" wide range application makes assembling, maintenance and upgrade faster

Description

UTP Blank Patch Panel 24 Port frame removable with Back Bar

FTP Blank Patch Panel 24 Port frame removable with Back Bar

P/N

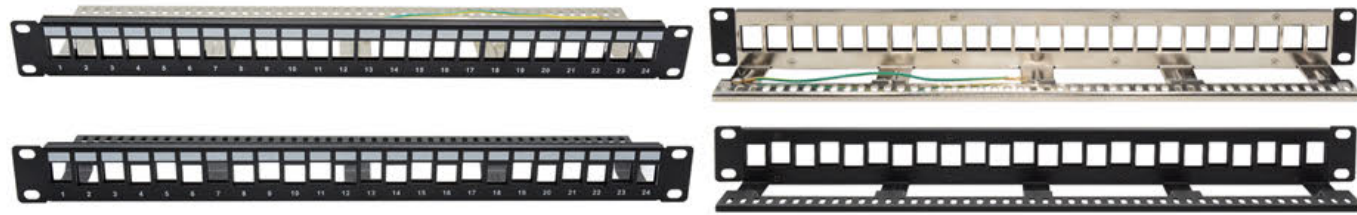
HPP-K2403

HPP-K2403F

Applications



HPP-K2405/2405F Blank Patch Panel with Rear Bar 24 Port



Characteristics

- The blank patch panel provides unloaded network solutions
- The rear bar with large space for cable organization
- The blank patch panel can be Unshielded and Shielded
- The front silk printing 24 ports for clear identification
- The blank insert can be straight and up-down design

Description

Unshielded 24 Port Blank Patch Panel with Back Bar
Shielded 24 Port Blank Patch Panel with Back Bar

P/N

HPP-K2405
HPP-K2405F

Applications



HPP-K2407F Shielded 24 Port Blank Patch Panel with Back Bar



Characteristics

- The blank patch panel is shielded 24 port with cable management bar
- Heavy duty 24 port patch panel supports Ethernet Cat6/6A, also backward with Cat5e and cat5 cabling
- The front port features silk printing port numbers for clear identification
- The rear bar provides widely space for cable management and organization
- The panel assembled with earth wire for protection
- Compatible with all standard keystone jacks and female couplers

Description

FTP patch panel 24 port with back bar

P/N

HPP-K2407F



HCM-P1U12 Plastic Cable Management



Plastic Cable Management System

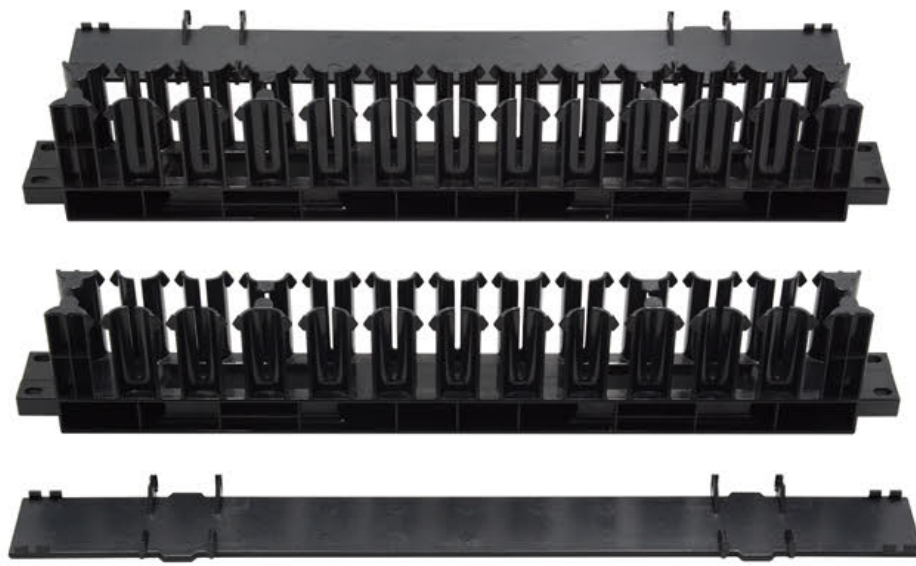
- High resistance ABS, less weight, more loaded
- Large space accommodates even Cat7/8 installations with larger diameter cables
- Black top cover can be easily folded or unfolded
- The plastic cable management fits all standard 19" cabinet and racks

Description

1U Cable Management, Plastic

P/N

HCM-P1U12



HCM-P-1U12-A, 1U Cable Management, Plastic



Characteristics

- The cable management is plastic horizontal type with 12 slots
- It helps to make cable organization neatly and orderly
- Equipped with standard 19" racks and cabinets
- Save rack space with large loading capacity

Description

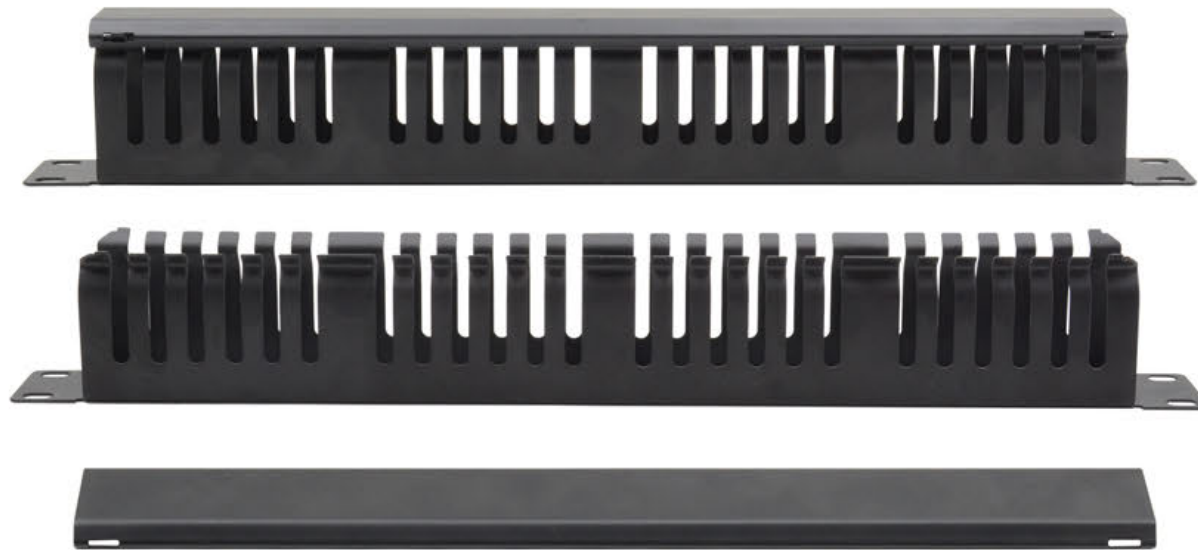
Plastic Cable Management 1U

P/N

HCM-P-1U12-A



HCM-M-1U24 Horizontal Metal Cable Management



Characteristics

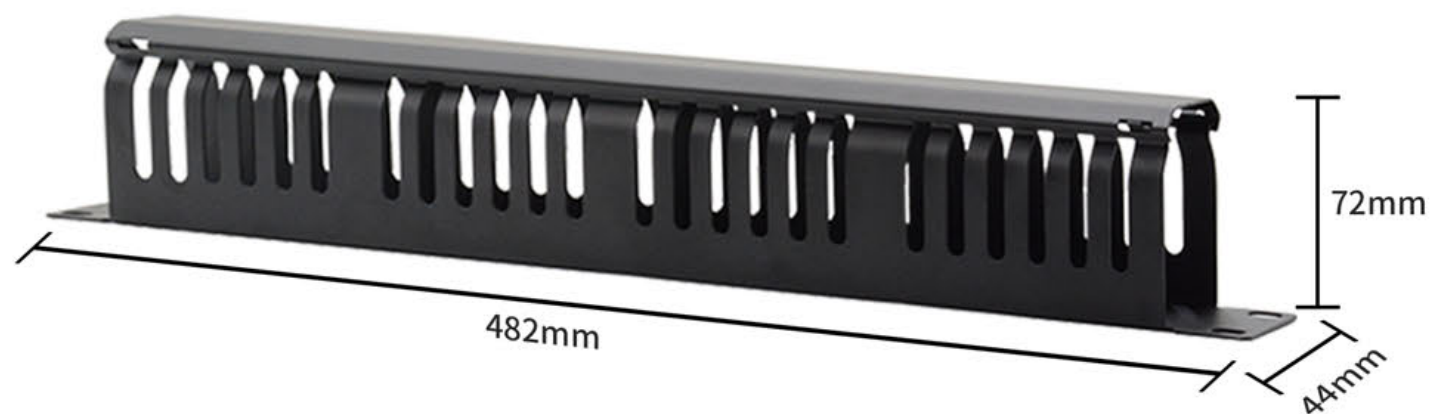
- Horizontal cable management keeps the cable well organized
- The cable management is made of SPCC cold-rolling steel with thickness 1.2mm
- Easy access to the cable through and make all cables neatly and well managed
- 1U rack space for standard 19" racks or cabinets

Description

Metal 1U Cable Management

P/N

HCM-M-1U24



HCM-M-1U12 Cable Management, Metal



Characteristics

- This cable management is horizontal metal type with 12 slots
- The narrow slot design is for easy separation of cables
- The steel construction makes the cable manager perfect for high density applications
- The cable manager is ideal for routing cables between patch panels and switches
- The cable management is rack mountable with standard racks and cabinets

Description

Metal Cable Management 1U

P/N

HCM-M-1U12



HCM-MS-B Brush Panel Cable Management



Characteristics

- Compatible with standard 19" cabinet, racks
- High density nylon brush organize cables orderly
- 1U brush strip cable management creates a neat and clean looking
- The panel is SPCC cold-rolled steel with thickness 1.2mm
- The brush is durable to prevent the dust outside

Size



HCM-MS-A Pass Through Panel brush cable manager



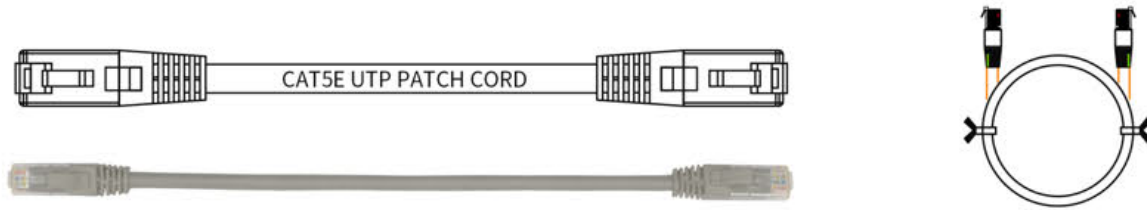
Characteristics

- Equipped to any EIA 19" Rack and Cabinets in Data Center or service room
- Front-rear Management for copper, fiber and telecommunication cables
- The panel is SPCC cold-rolled steel black color
- The brush is durable to prevent the dust outside
- Pass through holes includes brushes to control airflow

Size



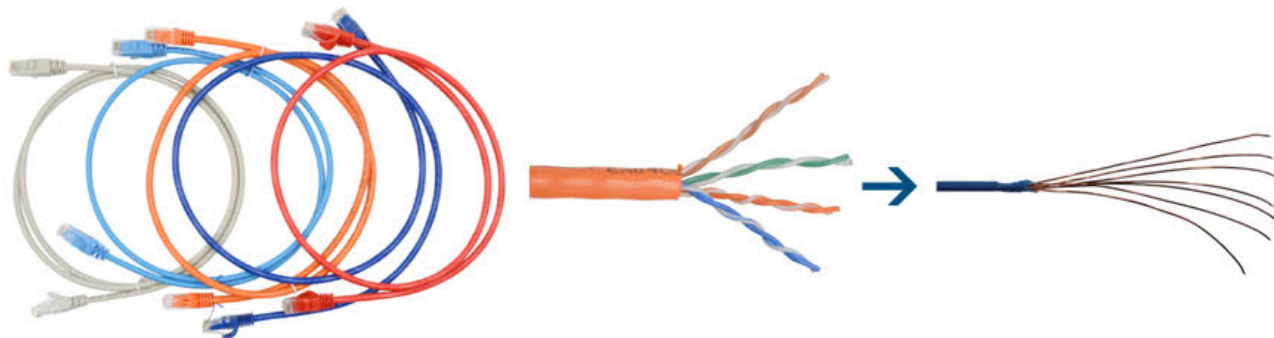
HPC-U-C5E CAT5E UTP Copper Patch Cord



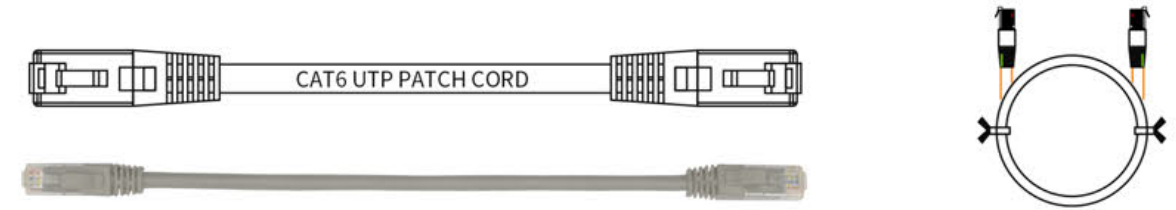
Characteristics

- Ethernet Patch cord for connecting LANs or the Internet
- Works with 10/100/1000BASE-T networks
- Standard RJ45 plugs with golden plated brass contacts for reliability
- Stranded copper conductors with 24AWG
- Fits well with RJ45 jacks, patch panels
- Meets and exceed ANSI/TIA-568-C.2 Category 5e and ISO 11801 Class D up to 100Mhz
- Color grey, customized colors like black, white, yellow are available

Part Number	HPC-U-C5E
Cable Conductor	Bare Copper 24AWG*2*4P 7/0.18
Insulation Material	PE
Insulation outer Dia	0.88±0.05mm
Twisted Pair	4
Cable outer Dia	5.4±0.2mm
Jacket	PVC or LSOH
RJ45 plug	Cat5E 8p8c 3u
Length	1M or customized length available



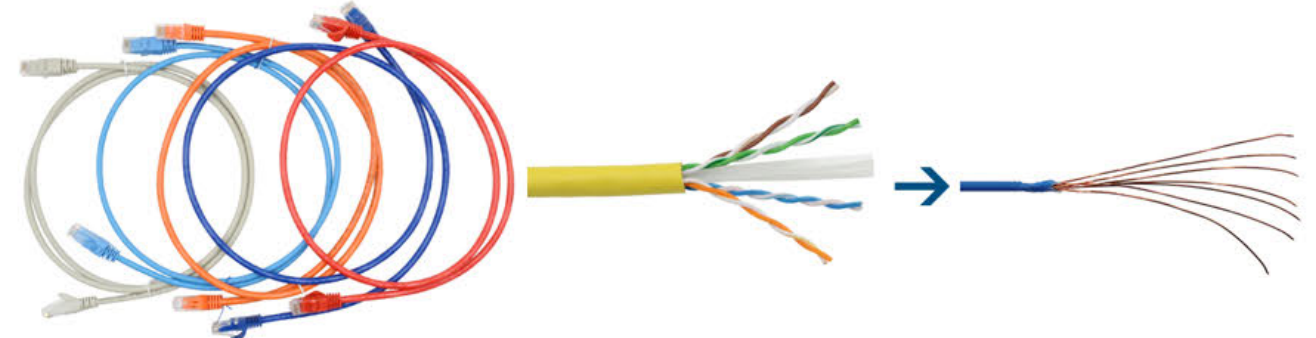
HPC-U-C6 CAT6 UTP Copper Patch Cord



Characteristics

- Suitable for use with high speed Gigabit internet, telecommunications, fast Ethernet Connections
- Boot cable design with molded strain relief boots for ease of use
- Fully assembled Cat6 RJ45 unshielded patch cord for maximum performance and reliability
- Stranded copper conductors with 24AWG
- Meets and exceed ANSI/TIA-568-C.2 Category 6 and ISO 11801 Class E up to 250Mhz
- Color grey, other colors like black, white, yellow are available

Part Number	HPC-U-C6
Cable Conductor	Bare Copper 24AWG*2*4P 7/0.18
Insulation Material	PE
Insulation outer Dia	0.95±0.05mm
Twisted Pair	4
Cable outer Dia	6.0±0.2mm
Jacket	PVC or LSOH
RJ45 plug	Cat6 8p8c 3u
Length	1M or customized length available



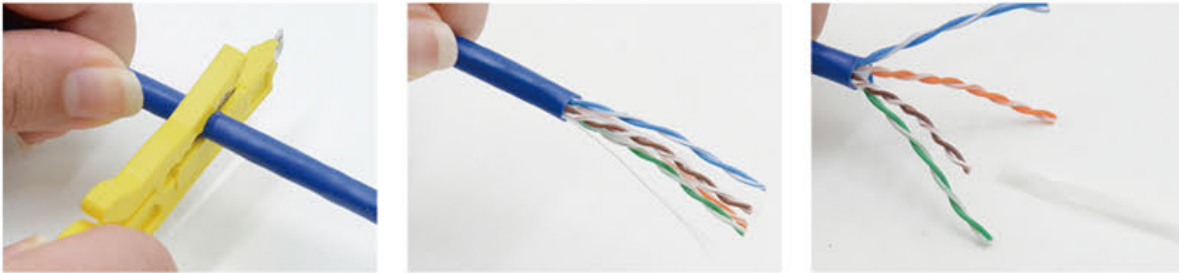
HRJ-P88-A RJ45 Tool-less Unshielded Modular Plug



- Speed termination without any tools required
- Slim design is compatible with all standard keystone jack and patch panel
- The plug cap wiring slot hold the cable from dropping off
- Crocodile 180 degree wiring style for fast and easy installation
- Wiring cap color coding is in accordance with the base color coding for easy recognition

Steps

1. Strip about 25mm of the outer jacket from the twisted pair, and trim off the cross web filler



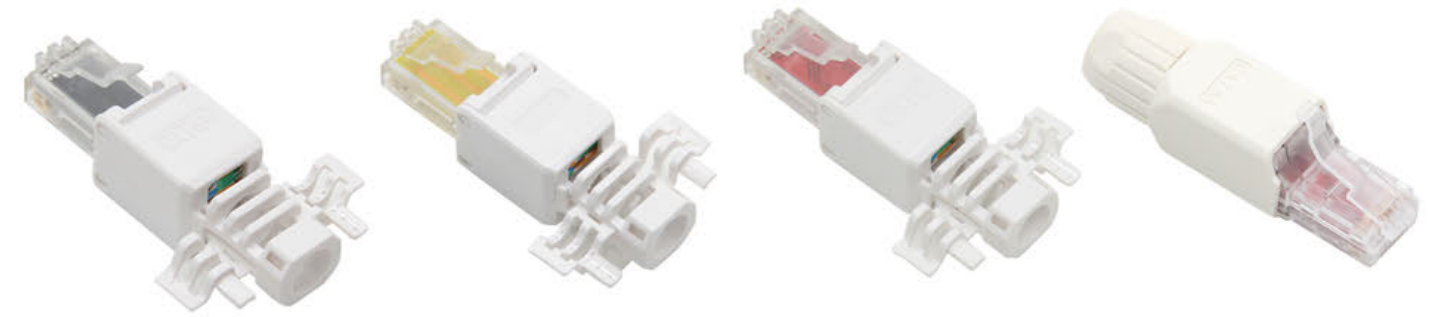
2. Insert wires into the cap slot under color coding T568B. Remove the excess wire length



3. Press wired cap into the base firmly and fold the 2 clips. Use cable tie to firm it and done



RJ45 Tool-less Modular Plug



RJ45 8P8C Modular Plug



RJ45 BOOTS



HBT-RJ45A



HBT-RJ45B



HBT-RJ45C



HBT-RJ45D

Network Crimping Tools



HT-200R



HT-2008R



HT-2810R



HT-5684R



HT-N568R



HT-210C



HT-318



HT-500R



HT-568



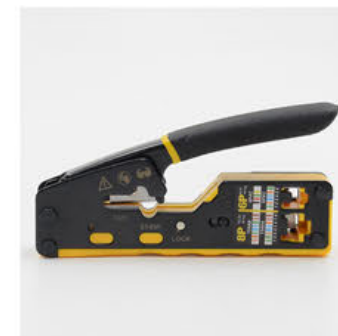
HT-468ST



HT-L2182R



HT-315



HT-6088



HT-7088